

The Wagner logo, featuring a stylized black triangle above the word "WAGNER" in bold, black, sans-serif capital letters, all contained within a yellow rectangular background.

Top level  
coating **quality.**

$$E_{\text{fficiency}} \times P_{\text{erformance}} = Q^2_{\text{uality}}$$

## WAGNER PXS Powder Centers

Process reliability  
High productivity  
Efficient material usage



**WAGNER** GROUP

# Top quality powder supply

WAGNER PXS powder centers – the benchmark in powder supply



WAGNER offers devices, equipment, and systems for all industrial surface coating, sealing and bonding applications. Our innovative products and solutions stand out due to their quality, efficiency and productivity.

WAGNER PXS powder centers are the benchmark for top coating **Quality** due to **Efficient** components and control as well as high **Performance** of the individual components and integration in the overall system. PXS comes as either a stand-alone system for retrofits or as an integral system including the complete control and operating unit. Its modular design ensures a solution perfectly tailored to customers' requirements.







Customer application criteria	Segment / product fit	Solution contribution
1 main color, few others	Appliances, fences, metal	Color change designed system incl. BigBag connection integrated
Highest coating quality + quick color change	Metal, architecture	Best powder conditioning by fluidized and vibrated container + US-sieving
Many guns + color change	Agriculture, transportation, metal	Version with up to 36 injectors available
Color change	Metal, lifestyle & leisure	General design for color change, user guided tour through color change to make it easy
Highest coating quality with single color application	Automotive, domestic appliances	Ultrasonic sieve for highest coating quality, separate connection of BigBag available
Powder difficult to operate	Wood	Fluidized and vibrated working container, fluidized fresh powder lance
Quality management	Automotive, architecture, metal	Powder consumption data documentation and other process parameters

# Total integration

The PXS powder center is not only the central powder supply element, it is also the centerpiece of the entire system. The complete plant control system is integrated in the switch cabinet.

EPS S2 with AFC closed  
loop technology

Small footprint,  
space-saving assembly

Fluidized and vibrated container,  
completely closed

Fresh powder supply  
from box

Fluidized fresh powder suction tube





LED light

Ultrasonic sieve

Color touch screen

USB interface

All-in-one control of PXS,  
application and booth

Space for 2nd fresh powder supply unit

Vibration table with load cell

Measure box filling volume  
Measure powder consumption



# High productivity – efficient material usage

PXS is the benchmark for top coating quality.

## 1 Optimized powder supply

The ultra-short suction path of the powder injectors boosts their power. The result? More output and less wear. The supply area is larger, making the PXS more flexible than other supply systems.

## 2 High-end quality

Fully integrated in the tank, the ultrasonic screen keeps out dirt, dissolves agglomerates, and noticeably improves coating surface quality as well as application efficiency.

## 2 Optimum powder preparation

Fluidization and vibration of the tank ensures a homogenous mix of fresh powder and circulating powder for an even powder output.



1 Process efficiency, productivity (cost, time)

2 Material and application efficiency (cost, weight, volume)

3 Service and operation efficiency (cost)

### 3 Always in the picture

The powder center's overview and function screens display all the information you need for efficient operation.

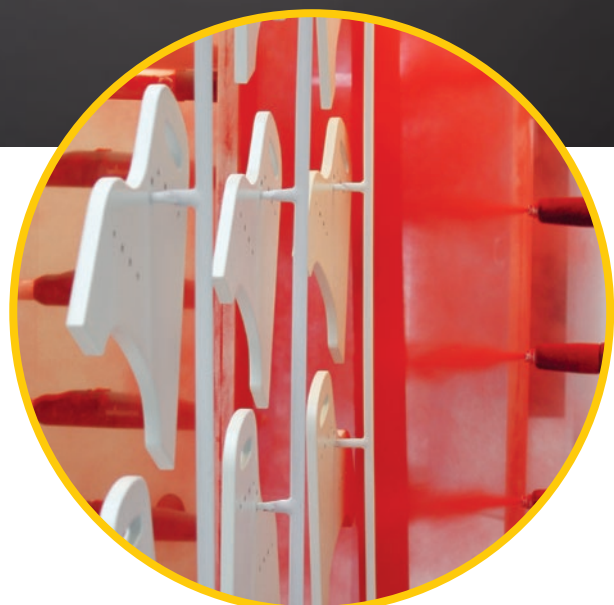
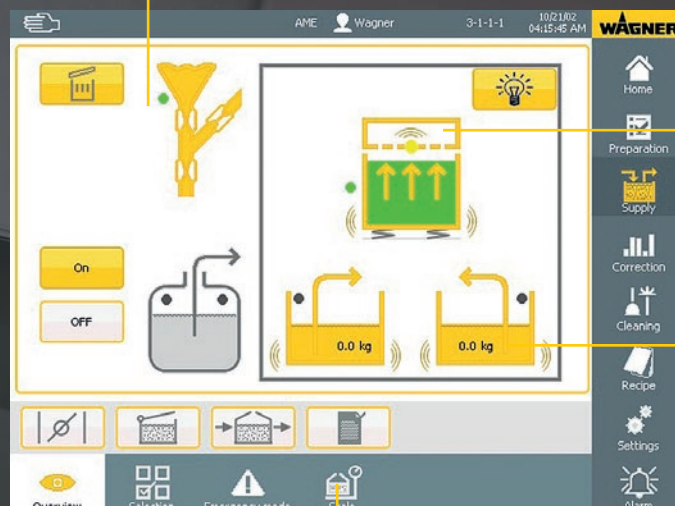
Peristaltic pump  
and recycling mode

Powder container  
information

Powder level / Function status /  
Sieve status

Actual fresh  
powder data

Powder consumption  
data history





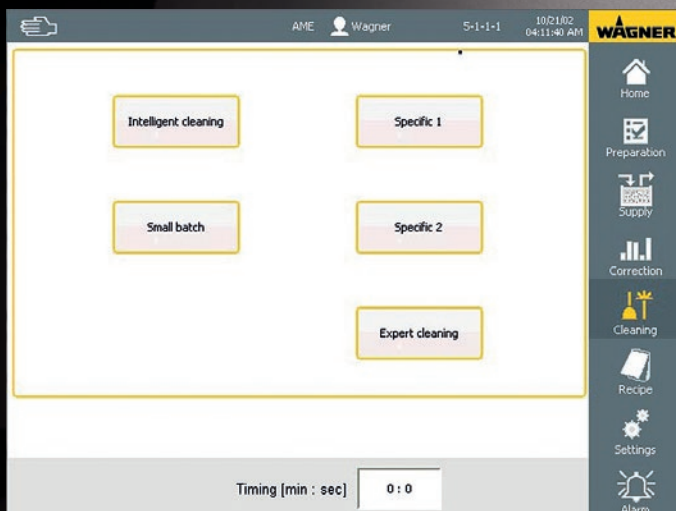
# Intelligent color changing

The WAGNER PXS features an automatic optimization function that sets new standards in color changing.

- 1 You have the option of defining very specific cleaning procedures that increase the productivity of your PXS. For instance, you can enter a sequence for only rough rinsing at the end of the shift. The „Intelligent Color Change“ function additionally applies the inherent intelligence of the PXS to only clean the components that have been in use. This is how the system autonomously optimizes the color change time.

## Color change start menu

Selection of color change sequences



- 1 Process efficiency, productivity (cost, time)
- 2 Material and application efficiency (cost, weight, volume)
- 3 Service and operation efficiency (cost)



### 3 Color change procedures perfectly under control

The color change menu has a clear, user-friendly structure. It guides the operator through the color change procedure. The user can see which process is currently running, what steps run automatically, and where manual intervention is necessary.

- Progress bar displaying active, completed, and next steps
- Partial information on the current step
- Preview of the next step
- Individual intensity selection
- Recovery mode available (recovery or loss)
- Display of color change duration and logging of overall duration
- Repetition of the current step is possible

#### Color change screen

On-screen user guiding  
Clear text information  
Pop-up screens

#### Status of single steps

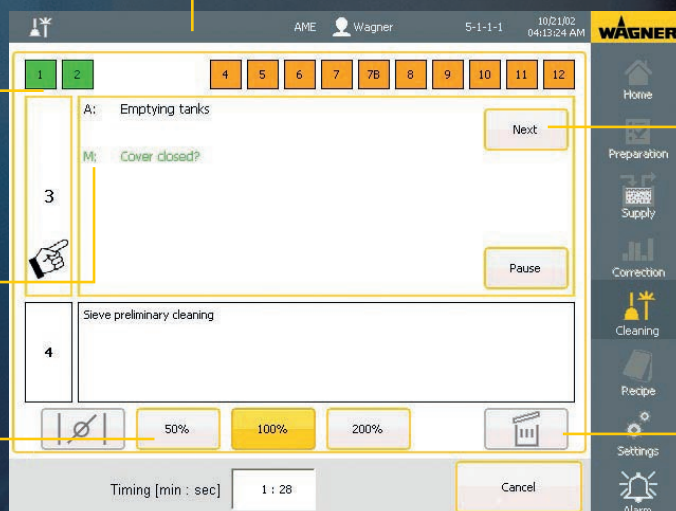
Green = done  
Orange = coming next  
Grey = not active

#### Active step information

A = Automatic process  
M = Manual process

#### Intensity mode

#### Color change time



#### Action button

Next / Repeat / Pause

Select recovery mode  
for each step possible

# Efficiency of all components

A system is only as efficient as the cumulative efficiency of all its components.

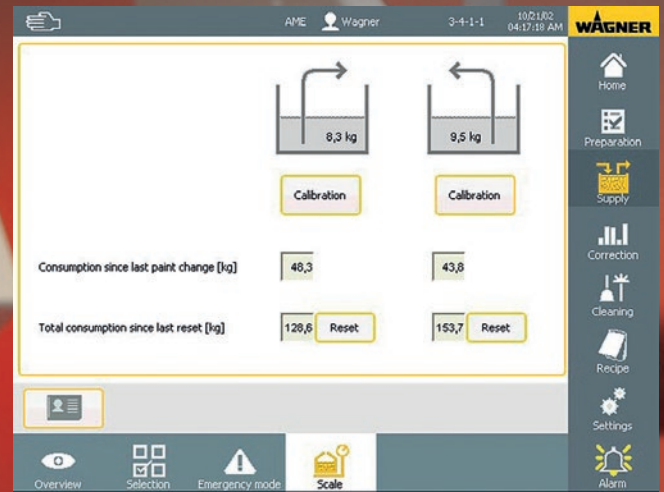
## 3 Optimized control

- Clear menu structure
- Graphics with touch function
- Supplemented by plain text in various languages



## 2 Documentation of powder consumption

- With the integrated scale.
- Powder consumption per batch
- Documentation and access via USB interface
- Use of the data to support inventory keeping and determine coating costs



## 1 Consistent coating results, minimized maintenance time

Regular maintenance of the injector wear parts ensures a consistent, reproducible coating result.

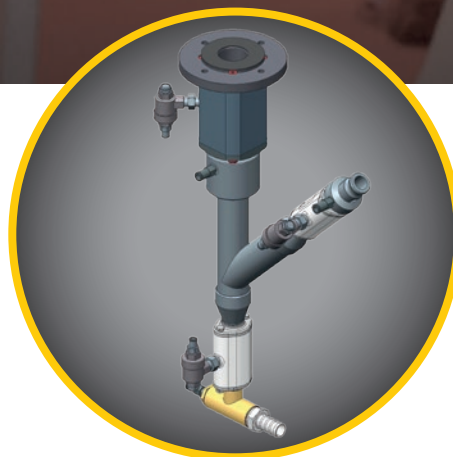
Thanks to the snap connection, it takes just 5 seconds to change the collector nozzle.



## 2 Avoidance of powder loss

The new Y-stopper supply piece makes it possible to automatically switch from loss to recovery after a color change!

- No more forgetting to change the recovery hose – leading to high powder loss
- No change delay due to the operator being otherwise occupied – leading to significant powder loss.





# PXS modular system

Standard flexibility, custom configuration.

Configuration	PXS 26	PXS 36	Accessories / variants
Max. number of injectors	26	36 (32 with ProfiTech M)	PI-PXS / PI-PXS HiCoat
Powder tank	Fluidizes and vibrates	Fluidizes and vibrates	
Powder quantity in the tank	Minimum approx. 3.5 kg Working level approx. 7 kg or 10 kg	Minimum approx. 4.8 kg Working level approx. 9.5 kg or 13.5 kg	Working level adjustable to 2 values by changing the installation position of the level probe
Powder level monitoring	Minimum / working level / overfull	Minimum / working level / overfull	
Operation	7" touchscreen (standalone) 10.4" touchscreen (integral M) 12" touchscreen (integral S)	7" touchscreen (standalone) 10.4" touchscreen (integral M) 12" touchscreen (integral S)	
Optional external touchscreen	Additional touchscreen with mirrored screen	Additional touchscreen with mirrored screen	
PXS control	•	•	
Control application / booth integrated	Integral ProfiTech M Integral ProfiTech S"	Integral ProfiTech M Integral ProfiTech S	ProfiTech M ProfiTech S
Extraction with integrated filter	•	•	
Extraction through after-filter	•	•	Take account of 1,000 m <sup>3</sup> /h additional suction power during after-filtering in coating mode
Fresh powder supply from:	1 box (standard) 2 boxes (optional) 1 fluid tank (optional) 1 external BigBag (optional)	1 box (standard) 2 boxes (optional) 1 fluid tank (optional) 1 external BigBag (optional)	Fluidized tank, BigBag WAGNER with 1 or 2 IP5000
Vibrating table for delivery packages	•	•	
Fluidization for box	•	•	Local fluidization of the suction lance
WAGNER "Cool Sieve" ultrasonic screen	•	•	Replacement screens 200 µm, 160µm

• Standard • Option • Not possible

- 1 Process efficiency, productivity (cost, time)
- 2 Material and application efficiency (cost, weight, volume)
- 3 Service and operation efficiency (cost)



#### **J. Wagner GmbH**

Industrial Solutions

D-88677 Markdorf

T +49 (0) 7544 505 - 0

F +49 (0) 7544 505 - 1200

[www.wagner-group.com](http://www.wagner-group.com)

#### **Walther Spritz- und Lackiersysteme GmbH**

Kärntner Straße 18 - 30

D-42327 Wuppertal

T +49 (0) 202 787 - 0

F +49 (0) 202 787 - 2217

[www.walther-pilot.de](http://www.walther-pilot.de)

#### **Reinhardt-Technik GmbH**

Waldheimstraße 3

D-58566 Kierspe

T +49 (0) 2359 666 - 0

F +49 (0) 2359 666 - 129

[www.reinhardt-technik.de](http://www.reinhardt-technik.de)

#### **C.A. Technologies**

Coating Atomization Technologies

337 S. Arthur Ave.

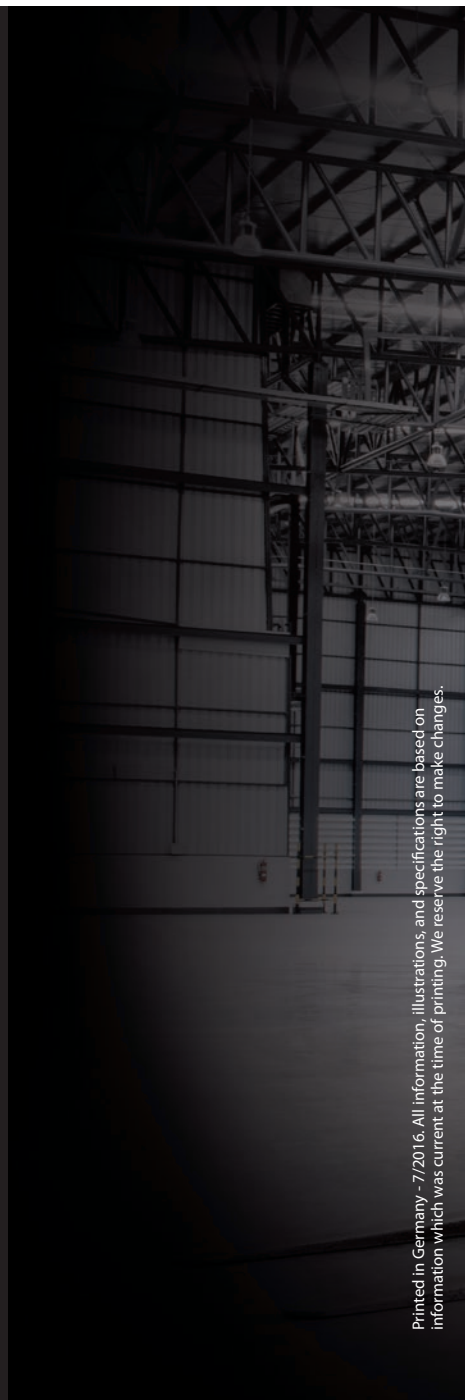
Louisville, CO 80027

T +1 888 820 4498

F +1 303 438 5708

[www.spraycat.com](http://www.spraycat.com)

[www.wagner-group.com](http://www.wagner-group.com)



Printed in Germany - 7/2016. All information, illustrations, and specifications are based on information which was current at the time of printing. We reserve the right to make changes.